



1-5



5



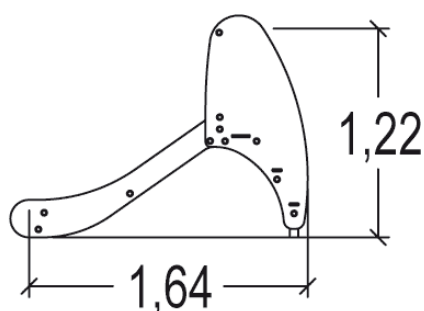
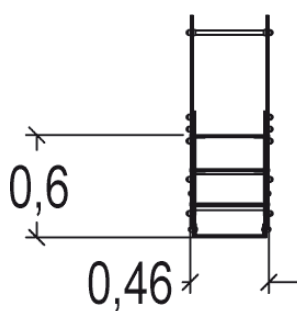
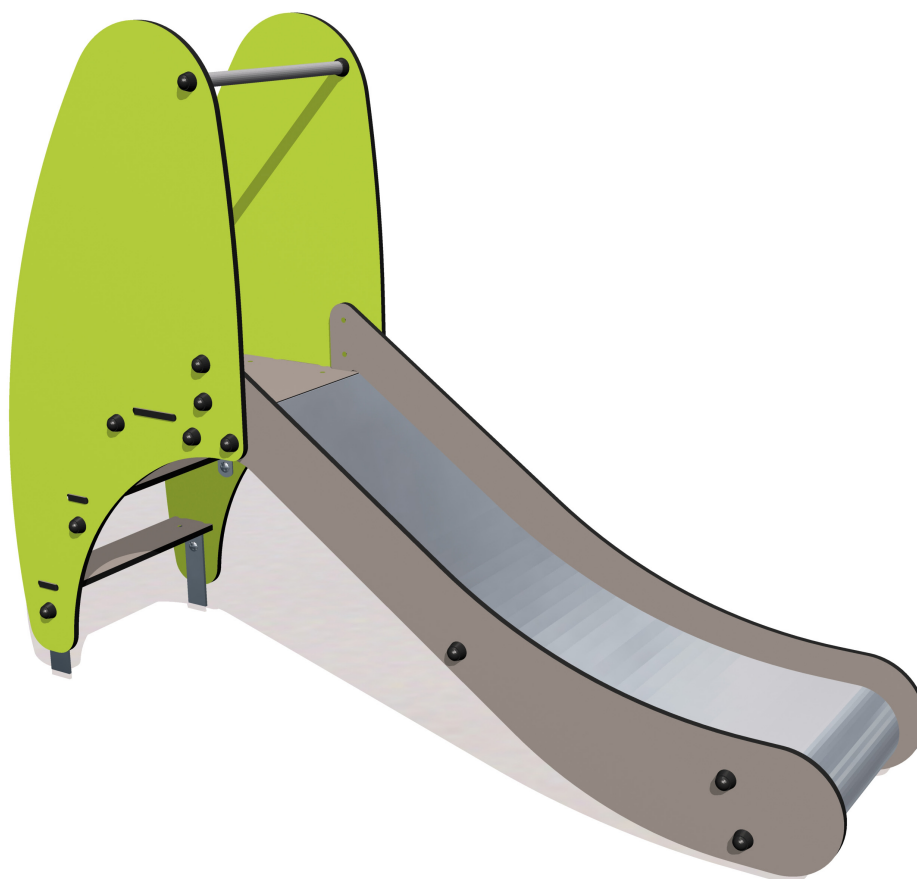
1m



1 = 1,75m  
2 = 0,46m  
3 = 1,3m



Physical inclusion  
Sensory inclusion  
Cognitive inclusion



Play value : 3

sliding



x1

meeting



x1

climbing



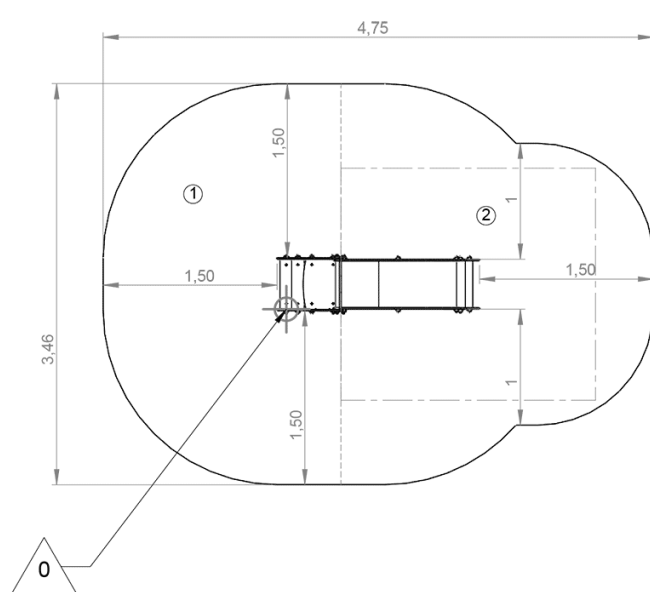
x1



## Installation of equipment

**IMPORTANT:** It is essential to refer to the installation instructions for information on the size of the safety areas.

—— Impact area (minimum normative surface)

- - - - Free space



		
1	0,6m	6,5m <sup>2</sup>
2	1m	7,5m <sup>2</sup>



2

02h00

0.1m<sup>3</sup>

14m<sup>2</sup>

49kg

10kg

EN  
1176