



3+



75



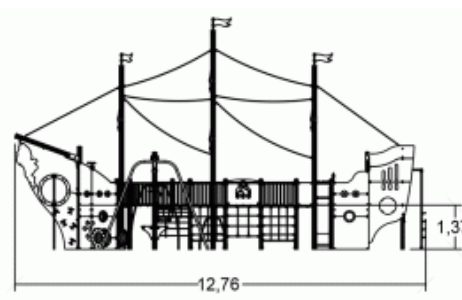
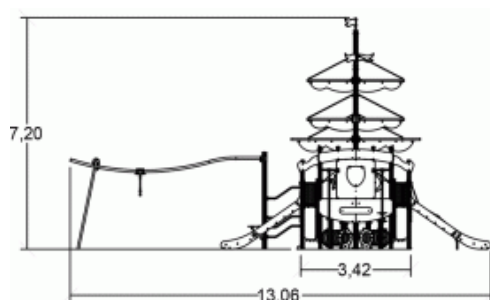
1,7m



1 = 13,09m  
2 = 12,69m  
3 = 6,9m



Physical inclusion  
Sensory inclusion  
Cognitive inclusion



Play value : **41**

climbing



x1

role play



x1

sliding



x4

meeting



x1

handling



x6

hanging



x1

hiding



x1

balancing



x1

taking shelter



x1

sound stimulation



x1

tactile stimulation



x6

visual stimulation



x4

climbing



x3

getting across



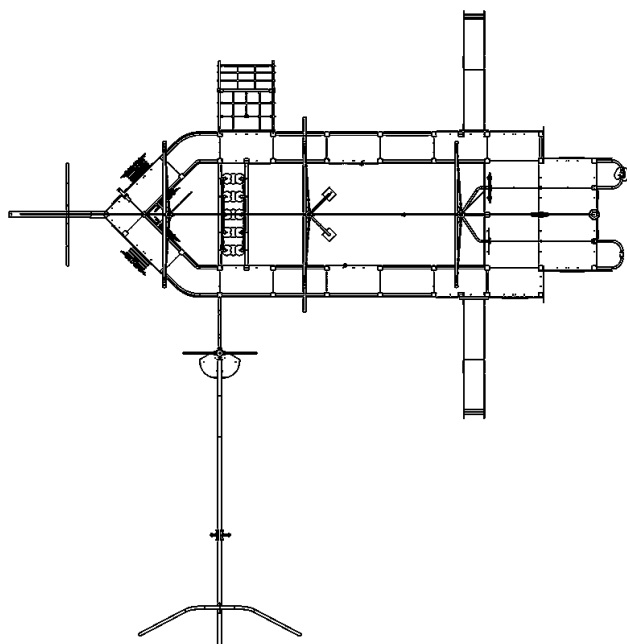
x6

crawling



x4

## Components

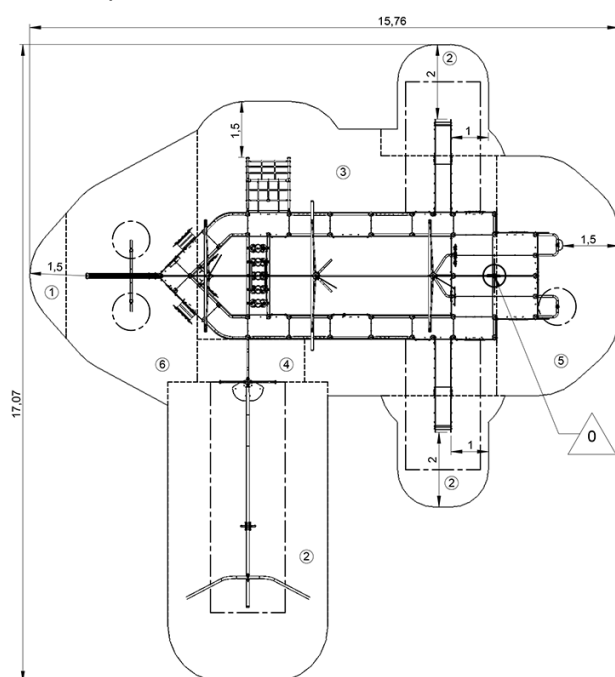


- ❶ Fireman's pole HT: 1.37
- ❷ Parrot mast HT: 1.37m
- ❸ Incline net H: 1.37m
- ❹ Telescope
- ❺ Cableway
- ❻ Slide H: 1.37m
- ❼ Climbing net
- ❽ Climbing net
- ❾ Tunnel
- ❿ Tunnel
- ⓫ The Pachinko Play Panel
- ⓬ Telescope
- ⓭ Climbing wall

## Installation of equipment

**IMPORTANT:** It is essential to refer to the installation instructions for information on the size of the safety areas.

- Impact area (minimum normative surface)
- - - Free space



1	0,6m	2,5m <sup>2</sup>
2	1m	47,5m <sup>2</sup>
3	1,37m	54m <sup>2</sup>
4	1,4m	3,5m <sup>2</sup>
5	1,5m	18,5m <sup>2</sup>
6	1,7m	20,5m <sup>2</sup>



4

70h00

2.3m<sup>3</sup>

145.5m<sup>2</sup>

2878kg

42kg

EN  
1176