



6+



31



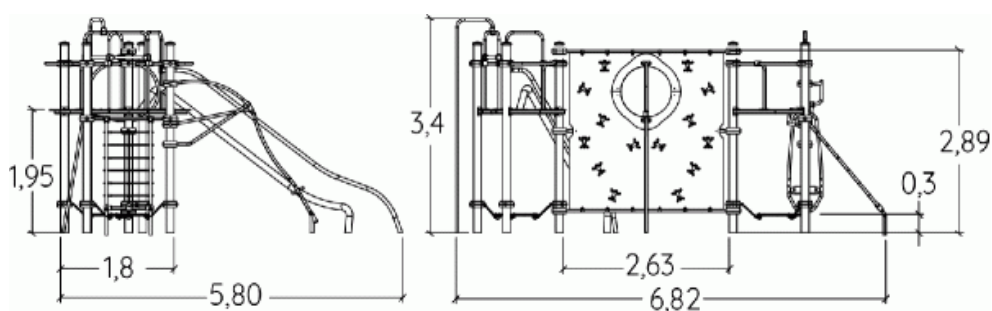
2,9m



1 = 6,82m
2 = 5,8m
3 = 3,4m



Physical inclusion
Sensory inclusion
Cognitive inclusion



Play value : **14**

climbing



x1

sliding



x3

meeting



x2

resting



x2

balancing



x3

rotating



x1

climbing



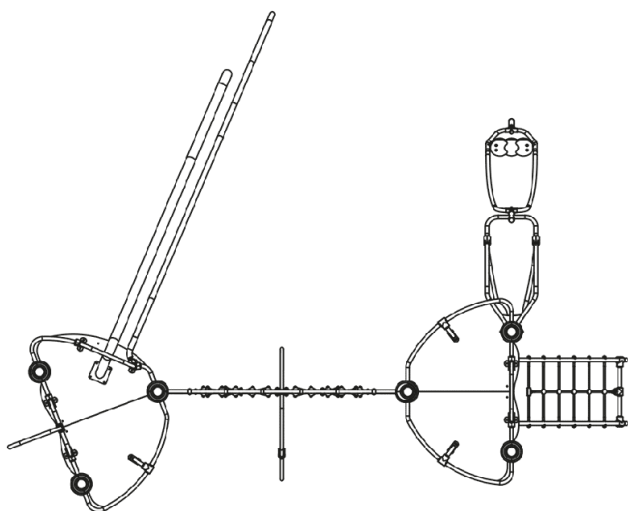
x1

getting across



x1

Components

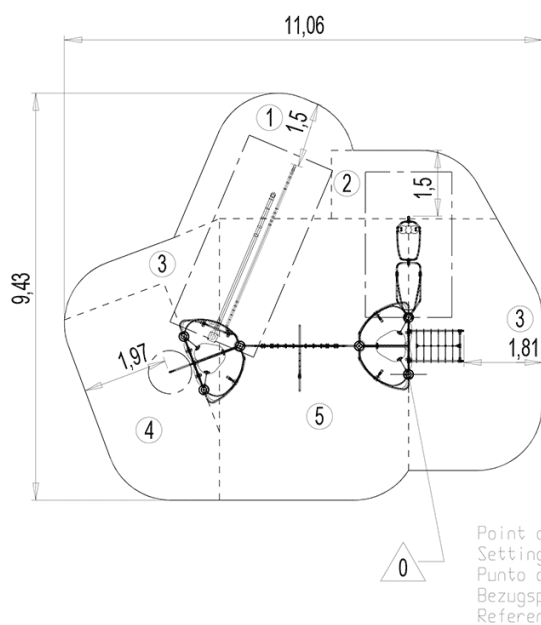


- ❶ Tour Epsilon
- ❷ Turbo Slide
- ❸ Fireman's pole
- ❹ Climbing wall
- ❺ Tour Gamma
- ❻ Incline net
- ❼ Gyro

Installation of equipment

IMPORTANT: It is essential to refer to the installation instructions for information on the size of the safety areas.

- Impact area (minimum normative surface)
- - - Free space



1	0,6m	8,5m ²
2	0,7m	5,5m ²
3	1,95m	22,5m ²
4	2,2m	12m ²
5	2,9m	28,5m ²



2

18h00

0.6m³

77m²

546kg

65kg

EN
1176