



2-6



6



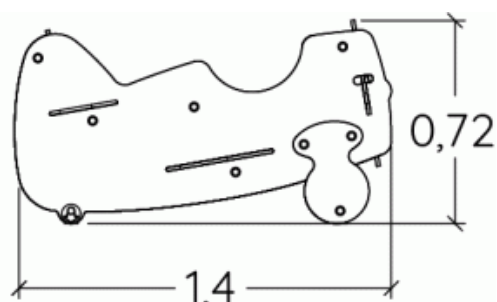
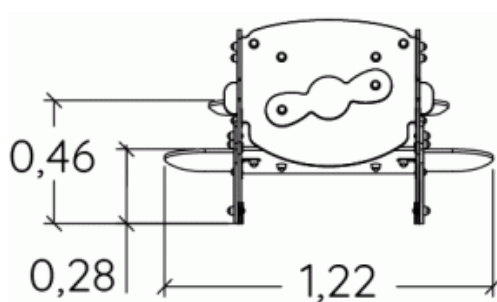
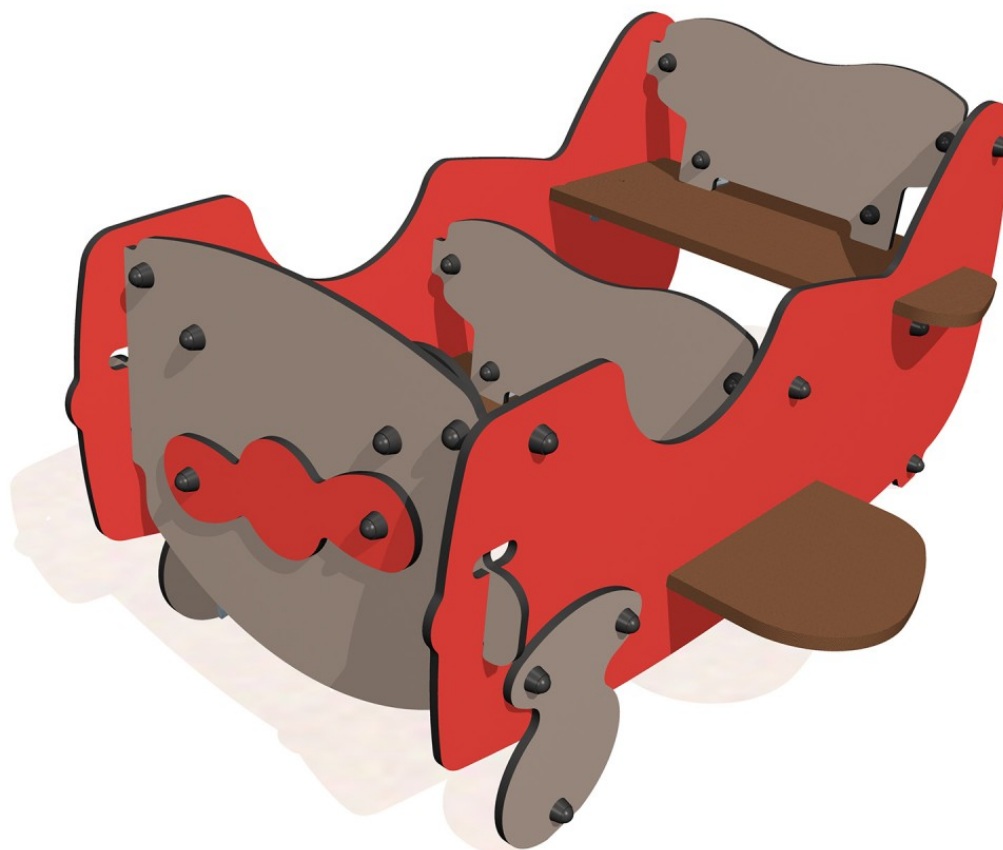
0,46m



1 = 1,4m  
2 = 1,22m  
3 = 0,75m



Physical inclusion  
Sensory inclusion  
Cognitive inclusion



Play value : **4**

role play



x1

meeting



x1

resting



x1



handling

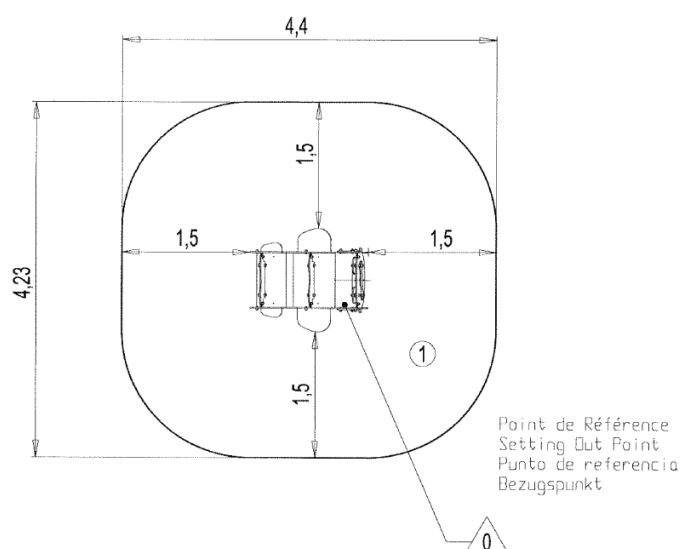




x1

## Installation of equipment

**IMPORTANT:** It is essential to refer to the installation instructions for information on the size of the safety areas.

-  Impact area (minimum normative surface)  
 Free space



		
1	0,46m	16m <sup>2</sup>



2



0m<sup>3</sup>



16m<sup>2</sup>



62kg



11kg

