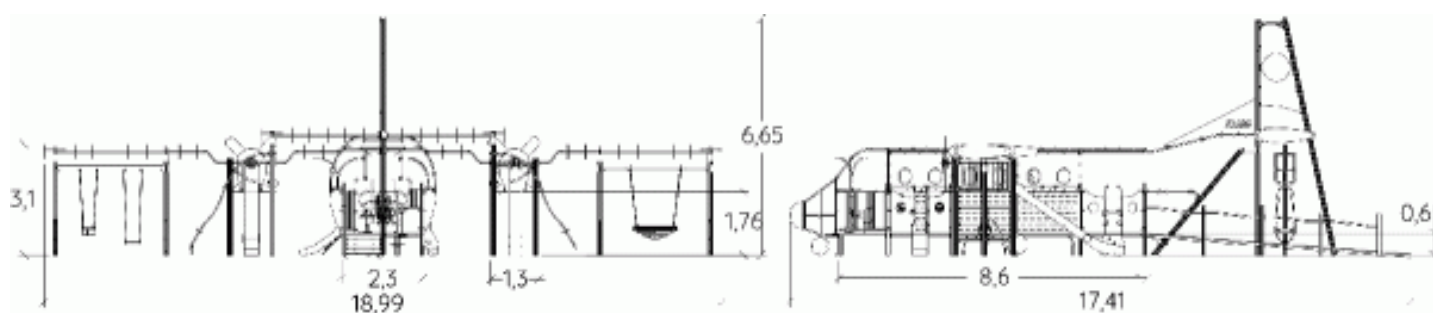


Physical inclusion  
Sensory inclusion  
Cognitive inclusion



Play value : **15**

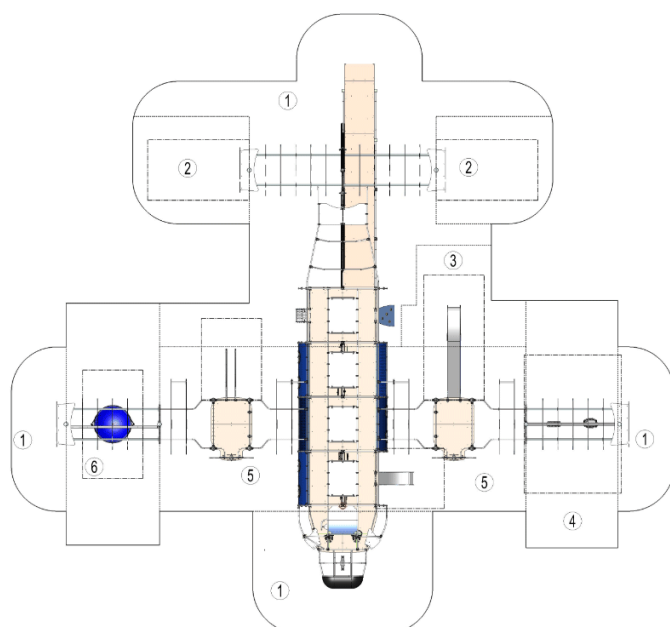
role play	sliding	meeting	resting	handling	swinging	hiding	rotating
x1	x2	x1	x1	x1	x1	x1	x3
sound stimulation	tactile stimulation	visual stimulation	climbing				
x1	x1	x1	x1				

## Installation of equipment

**IMPORTANT:** It is essential to refer to the installation instructions for information on the size of the safety areas.

———— Impact area (minimum normative surface)

- - - - - Free space



1	<0,6m	105m <sup>2</sup>
2	0,7m	28m <sup>2</sup>
3	1m	17m <sup>2</sup>
4	1,4m	24m <sup>2</sup>
5	1,77m	68m <sup>2</sup>
6	2m	20m <sup>2</sup>



4

40h00

0m<sup>3</sup>

262m<sup>2</sup>

3886kg

63kg

EN

1176