



2+



22



1,17m



1 = 6,18m
2 = 2,16m
3 = 2,94m



Physical inclusion
Sensory inclusion
Cognitive inclusion



Play value : 20

climbing



x2

sliding



x2

meeting



x3

resting



x1

handling



x2

hiding



x1

taking shelter



x2

tactile stimulation



x2

climbing



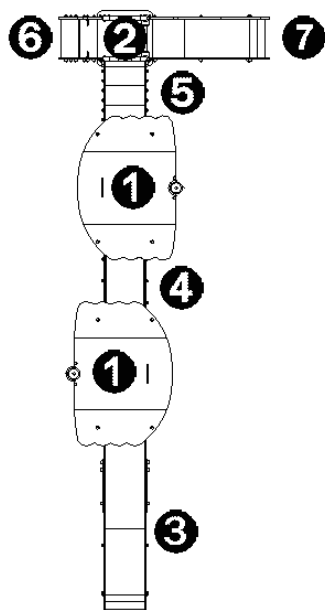
x4

getting across



x1

Components

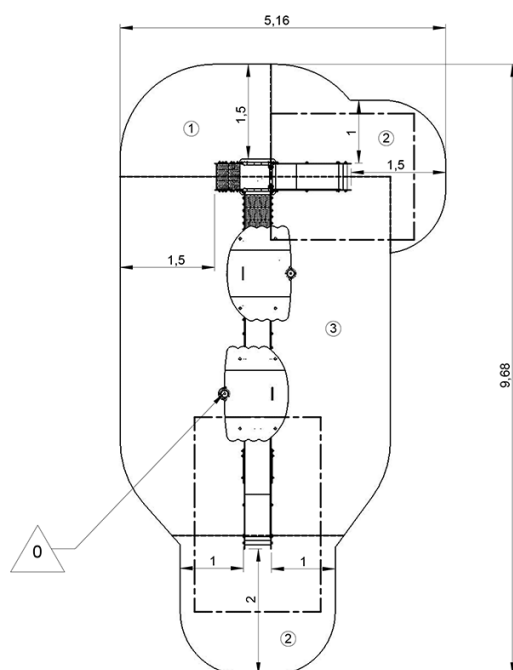


- ① Tower HT: 1.17m
- ② Platform HT: 0.6m
- ③ Slide HT: 1.17m
- ④ Walkway
- ⑤ Connecting staircase
- ⑥ Steps
- ⑦ Slide HT: 0.6m
- ⑧ Climbing wall
- ⑨ Seat
- ⑩ Counting panel

Installation of equipment

IMPORTANT: It is essential to refer to the installation instructions for information on the size of the safety areas.

- Impact area (minimum normative surface)
- Free space



1	0,6m	4m ²
2	1m	7,5m ²
3	1,17m	23,5m ²



2

21h00

0.25m³

35m²

412kg

17kg

EN

1176