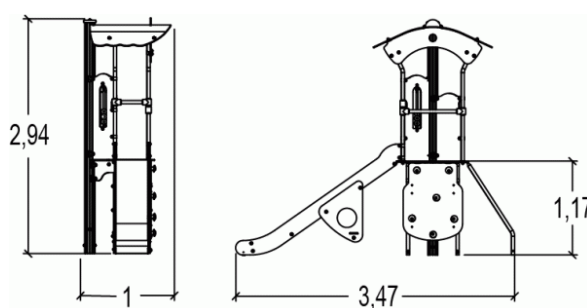


Physical inclusion
Sensory inclusion
Cognitive inclusion



Play value : 9

climbing



x1

sliding



x1

meeting



x1

resting



x1

handling



x1

taking shelter



x1

tactile stimulation



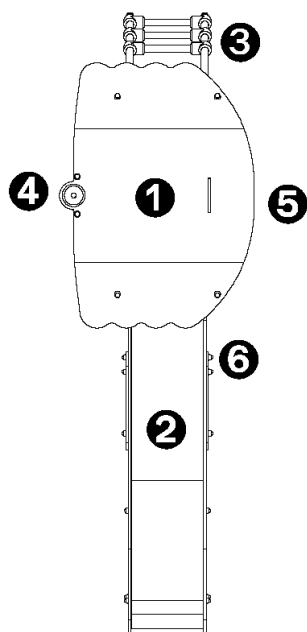
x1

climbing



x2

Components

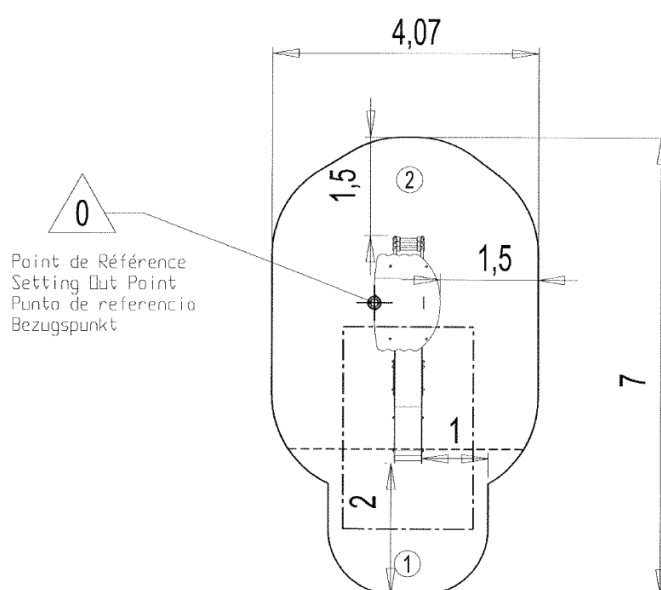


- ❶ Tower HT: 1.17m
- ❷ Slide HT: 1.17m
- ❸ Wall
- ❹ Inclined ladder
- ❺ Climbing wall
- ❻ Seat

Installation of equipment

IMPORTANT: It is essential to refer to the installation instructions for information on the size of the safety areas.

- Impact area (minimum normative surface)
- - - Free space



0
Point de Référence
Setting Out Point
Punto de referencia
Bezugspunkt



1	1m	5,5m ²
2	1,17m	18m ²



2

08h00

0.1m³

23.5m²

163kg

17kg

EN

1176