



0.5+



12



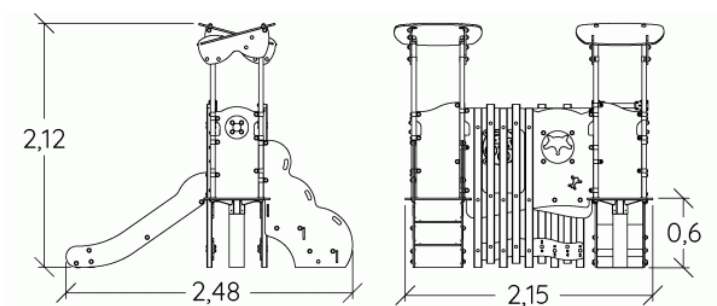
1m



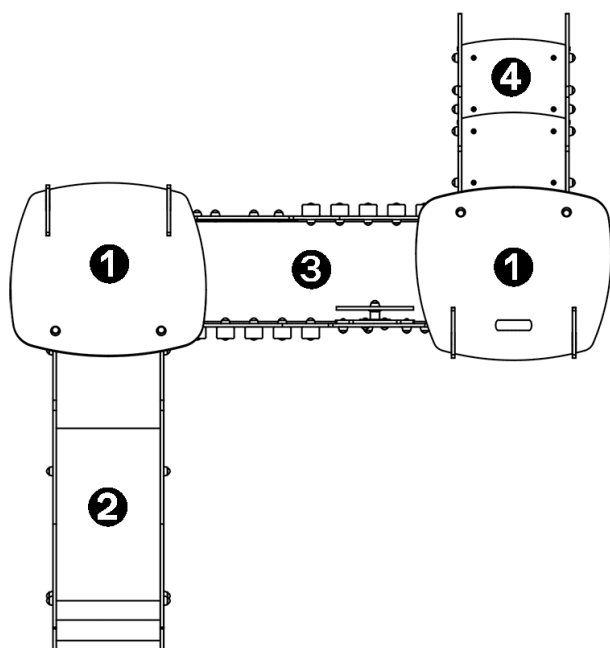
1 = 2,48m
2 = 2,15m
3 = 2,12m



Physical inclusion
Sensory inclusion
Cognitive inclusion



Components

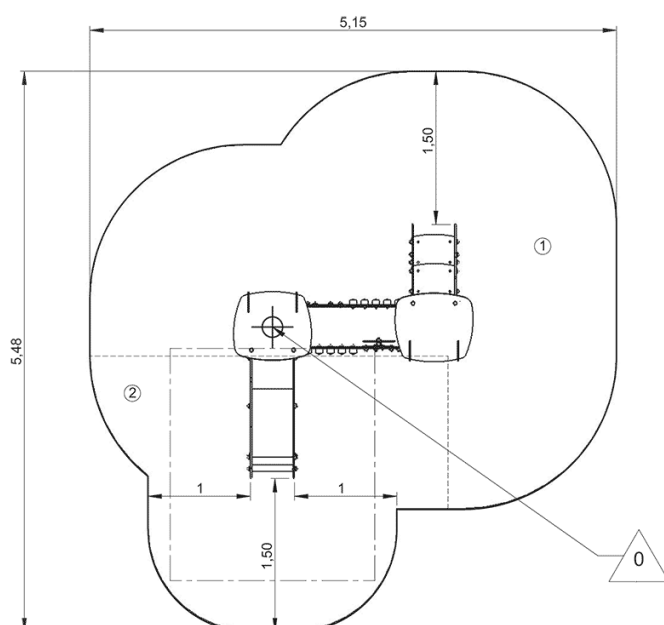


- ❶ Platform HT: 0.6m
- ❷ Slide HT: 0.6m
- ❸ "Connecting gangway with wooden fencing
- ❹ Baby access steps

Installation of equipment

IMPORTANT: It is essential to refer to the installation instructions for information on the size of the safety areas.

- Impact area (minimum normative surface)
- Free space



1	0,6m	14m ²
2	1m	7,5m ²



2



3h30



0.16m³



21.5m²



227kg



12kg

