



2+



5



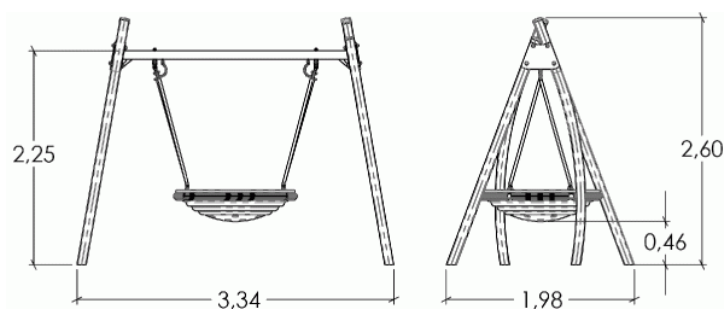
1,46m



1 = 3,34m  
2 = 1,98m  
3 = 2,6m



Physical inclusion  
Sensory inclusion  
Cognitive inclusion



Play value : 3

meeting



x1

resting



x1


swinging



x1

## Installation of equipment

**IMPORTANT:** It is essential to refer to the installation instructions for information on the size of the safety areas.

 Impact area (minimum normative surface)

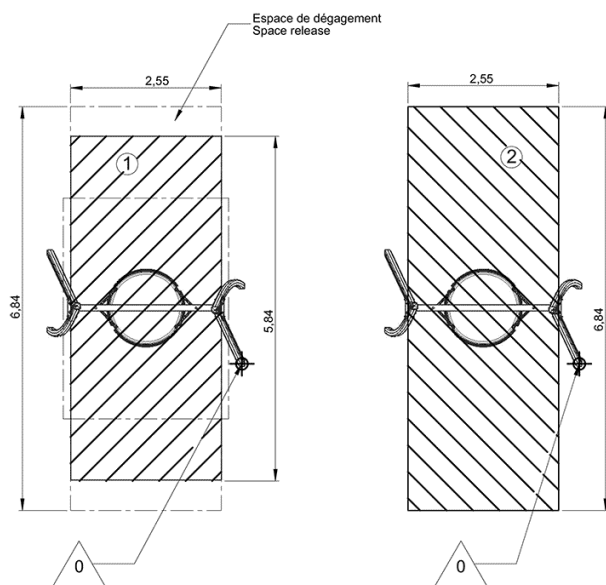
 Free space



Zone d'Impact Sol souple  
Impact Area Wetpour  
Area de Impacto  
Fallraum bei synthetischem Fallschutz



Zone d'Impact Sol fluide  
Impact Area Loose particle material  
Arenero  
Fallraum bei losem Bodenmaterial



1	1,46m	15m <sup>2</sup>
2	1,46m	17,5m <sup>2</sup>



2



01h30



0.11m<sup>3</sup>



15m<sup>2</sup>



173kg



42kg

