



2+



5



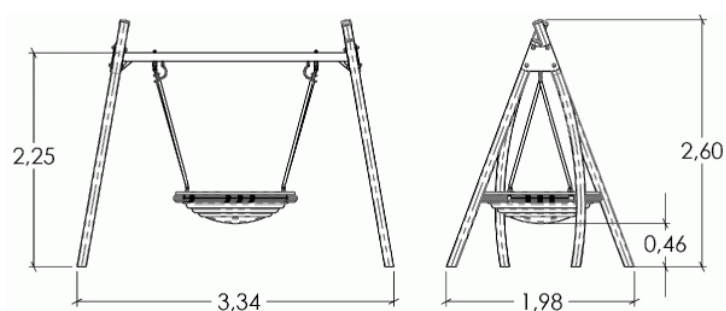
1,46m



1 = 3,34m
2 = 1,98m
3 = 2,6m



Physical inclusion
Sensory inclusion
Cognitive inclusion



Play value : **3**

meeting



x1

resting



x1

swinging



x1

Installation of equipment

IMPORTANT: It is essential to refer to the installation instructions for information on the size of the safety areas.

———— Impact area (minimum normative surface)

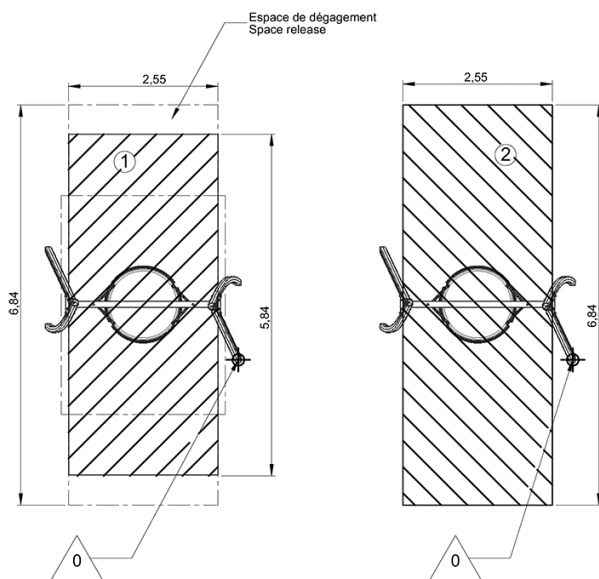
— . — . — . Free space



Zone d'Impact Sol souple
Impact Area Wetpour
Area de Impacto
Fallraum bei synthetischem Fallschutz



Zone d'Impact Sol fluant
Impact Area Loose particle material
Arenero
Fallraum bei losem Bodenmaterial



1	1,46m	15m ²
2	1,46m	17,5m ²



2

01h30

0.11m³

15m²

173kg

42kg

EN
1176