



1+



2



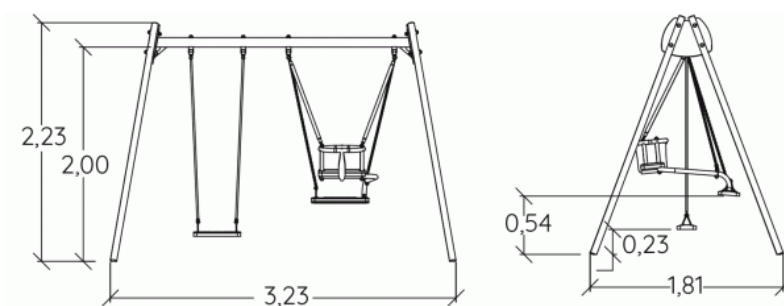
1,39m



1 = 3,23m
2 = 1,81m
3 = 2,23m



Physical inclusion
Sensory inclusion
Cognitive inclusion



Play value : **7**

meeting



x1

resting



x3

swinging



x3

Installation of equipment

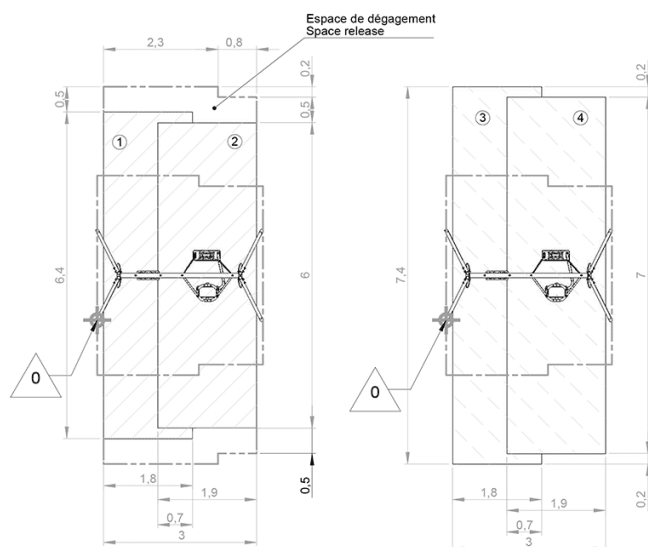
IMPORTANT: It is essential to refer to the installation instructions for information on the size of the safety areas.

———— Impact area (minimum normative surface)

- - - - Free space

① Zone d'Impact Sol souple
Impact Area Wetpour
Area de Impacto
Fallraum bei synthetischem Fallschutz

④ Zone d'Impact Sol fluide
Impact Area Loose particle material
Arenero
Fallraum bei losem Bodenmaterial



1	1,2m	7,14m ²
2	1,39m	11,66m ²
3	1,2m	8,21m ²
4	1,39m	13,6m ²



2

02h00

0.11m³

18.8m²

99kg

20kg

EN
1176