



1+



2



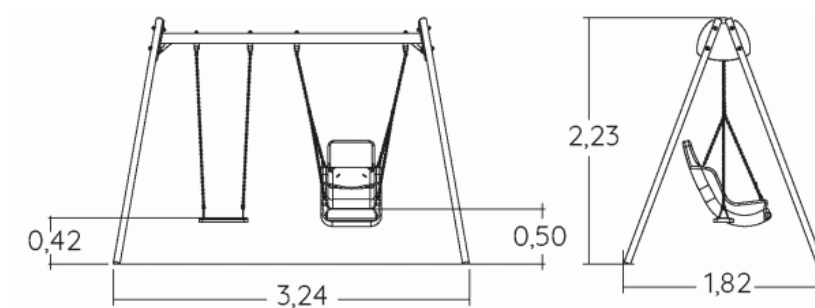
1,4m



1 = 3,2m
2 = 1,8m
3 = 2,2m



Physical inclusion
Sensory inclusion
Cognitive inclusion



Play value : 4

resting



x2

swinging



x2

Installation of equipment

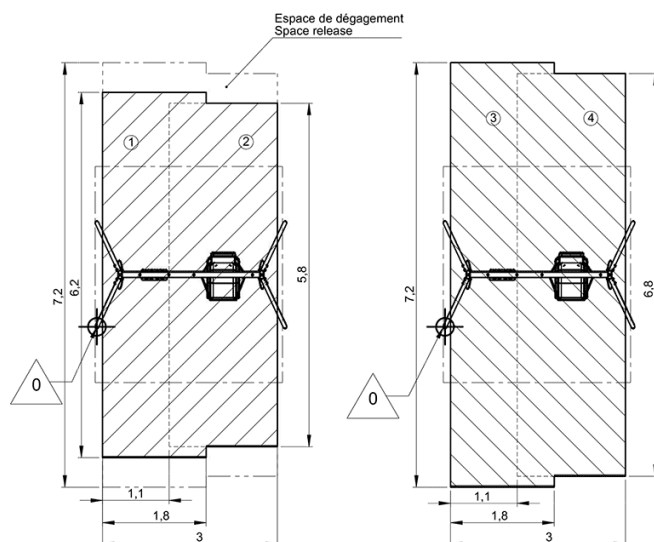
IMPORTANT: It is essential to refer to the installation instructions for information on the size of the safety areas.

———— Impact area (minimum normative surface)

- - - - Free space

① Zone d'Impact Sol souple
Impact Area Welpour
Area de Impacto
Fallraum bei synthetischem Fallschutz

④ Zone d'Impact Sol fluant
Impact Area Loose particle material
Arenero
Fallraum bei losem Bodenmaterial



1	1,2m	7,5m ²
2	1,4m	11m ²
3	1,2m	8,5m ²
4	1,4m	12,5m ²



2

02h00

0.11m³

18.5m²

94kg

20kg

EN
1176