



2+



5



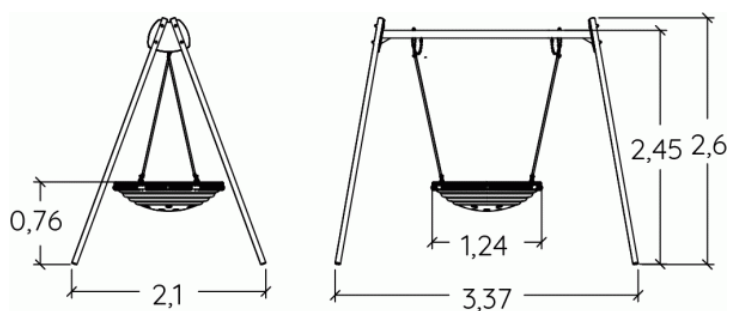
1,55m



1 = 3,37m
2 = 2,1m
3 = 2,63m



Physical inclusion
Sensory inclusion
Cognitive inclusion



Play value : **3**

meeting



x1

resting



x1

swinging

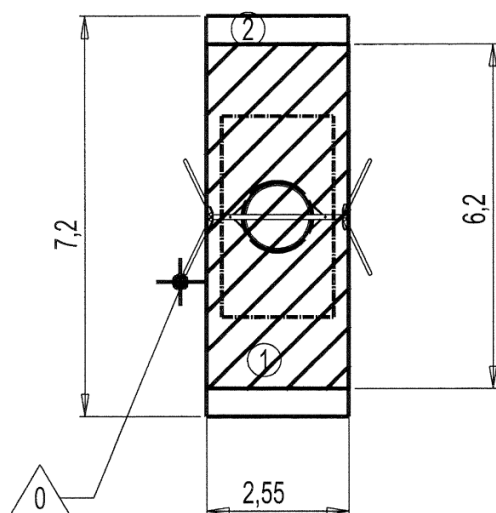


x1

Installation of equipment

IMPORTANT: It is essential to refer to the installation instructions for information on the size of the safety areas.

-  Impact area (minimum normative surface)
 Free space



Point de Référence
 Setting Out Point
 Punto de referencia
 Bezugspunkt
 Referentiepunt



1	1,55m	16m ²
2	1,55m	18,5m ²



2



04h00



0.26m³



16m²



134kg



43kg

