



2+



5



1,55m



1 = 3,37m

2 = 2,1m

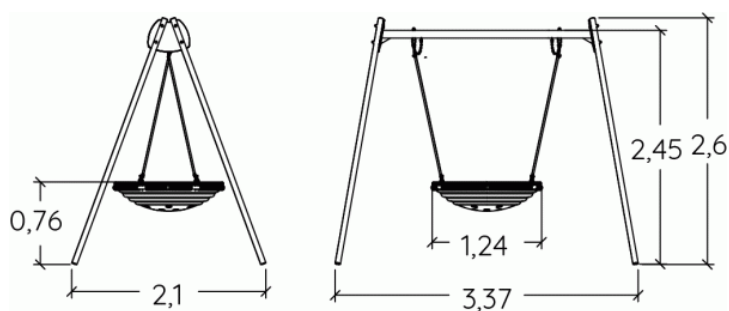
3 = 2,6m



Physical inclusion

Sensory inclusion

Cognitive inclusion



Play value : 3

meeting



x1

resting



x1

swinging



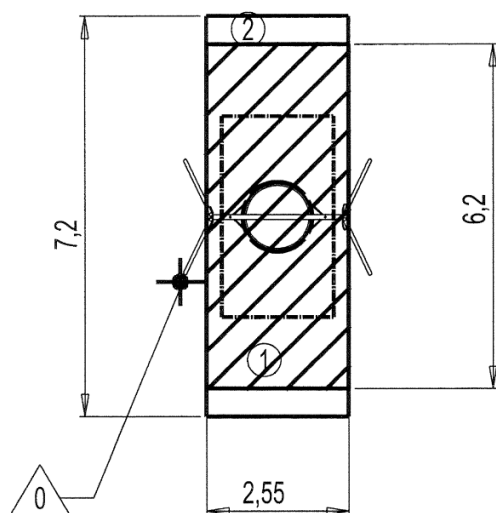
x1

Installation of equipment

IMPORTANT: It is essential to refer to the installation instructions for information on the size of the safety areas.

— Impact area (minimum normative surface)

- - - Free space



Point de Référence
Setting Out Point
Punto de referencia
Bezugspunkt
Referentiepunt



1	1,55m	16m ²
2	1,55m	18,5m ²



2

04h00

0.26m³

16m²

134kg

43kg

EN
1176