



3+



5



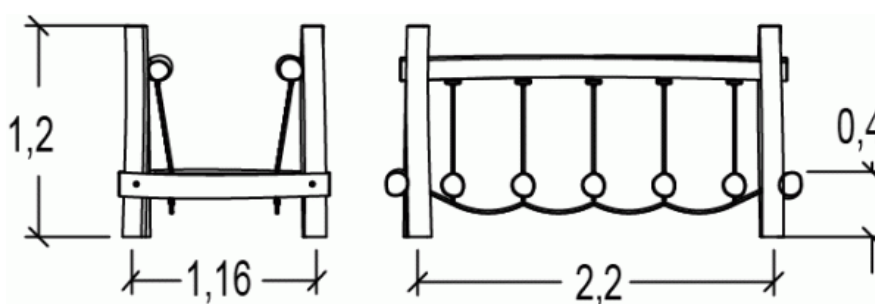
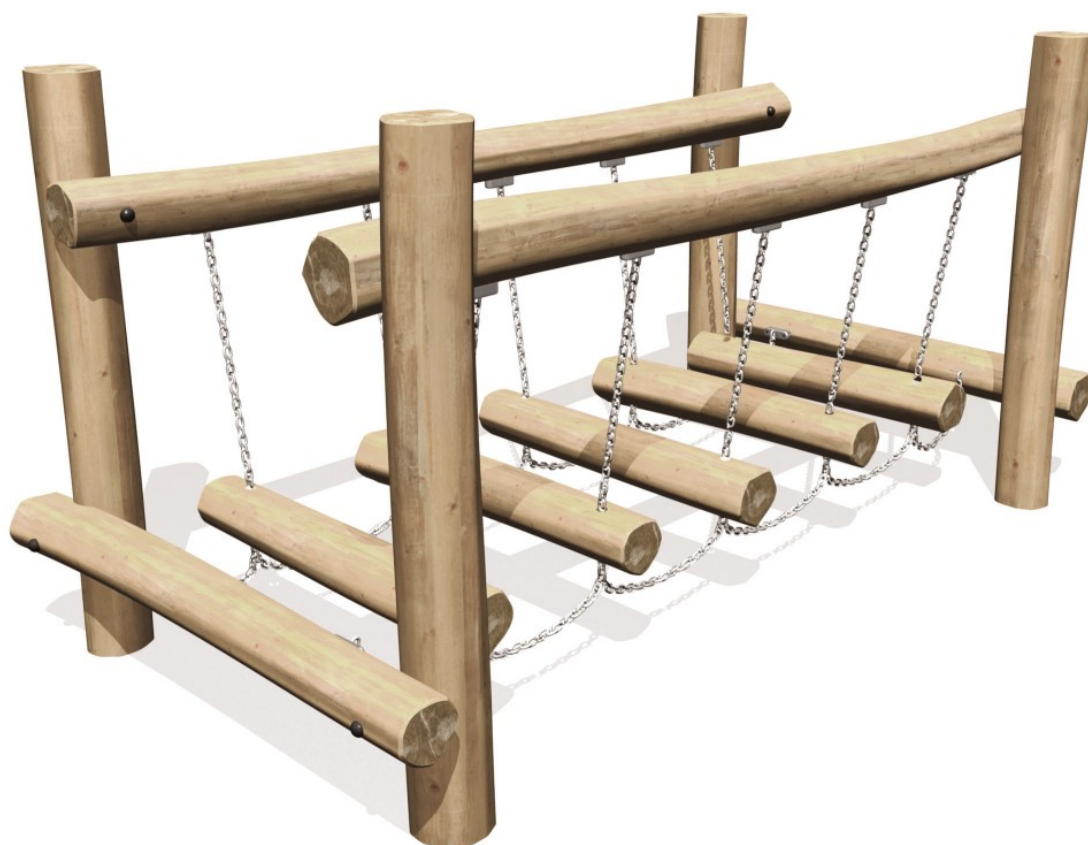
0,6m



1 = 2m
2 = 1m
3 = 1,2m



Physical inclusion
Sensory inclusion
Cognitive inclusion



Play value : **2**

balancing

getting across

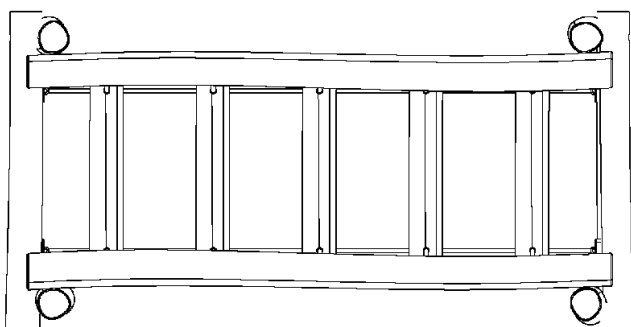


x1



x1

Components

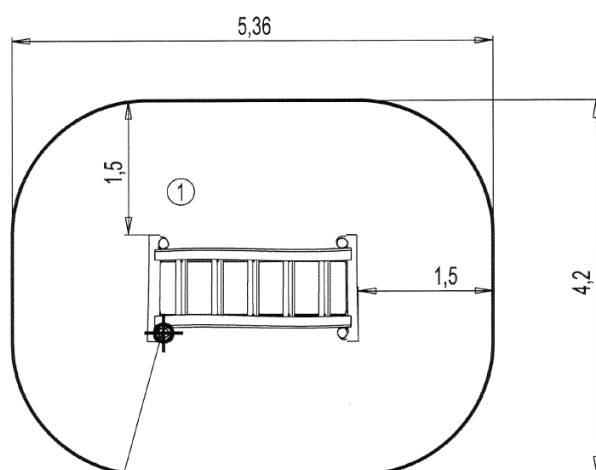


1 Swinging log steps

Installation of equipment

IMPORTANT: It is essential to refer to the installation instructions for information on the size of the safety areas.

- Impact area (minimum normative surface)
- Free space



Point de Référence
Setting Out Point
Punto de referencia
Bezugspunkt
Referentiepunt



1	<0,6m	21m ²
---	-------	------------------



2

02h00

0m³

21m²

181kg

42kg

EN

1176