



3+



5



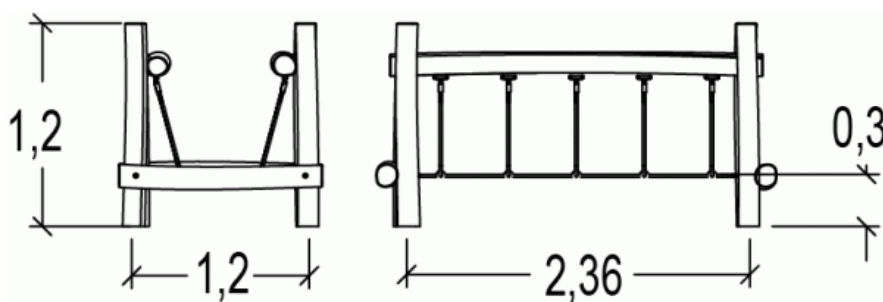
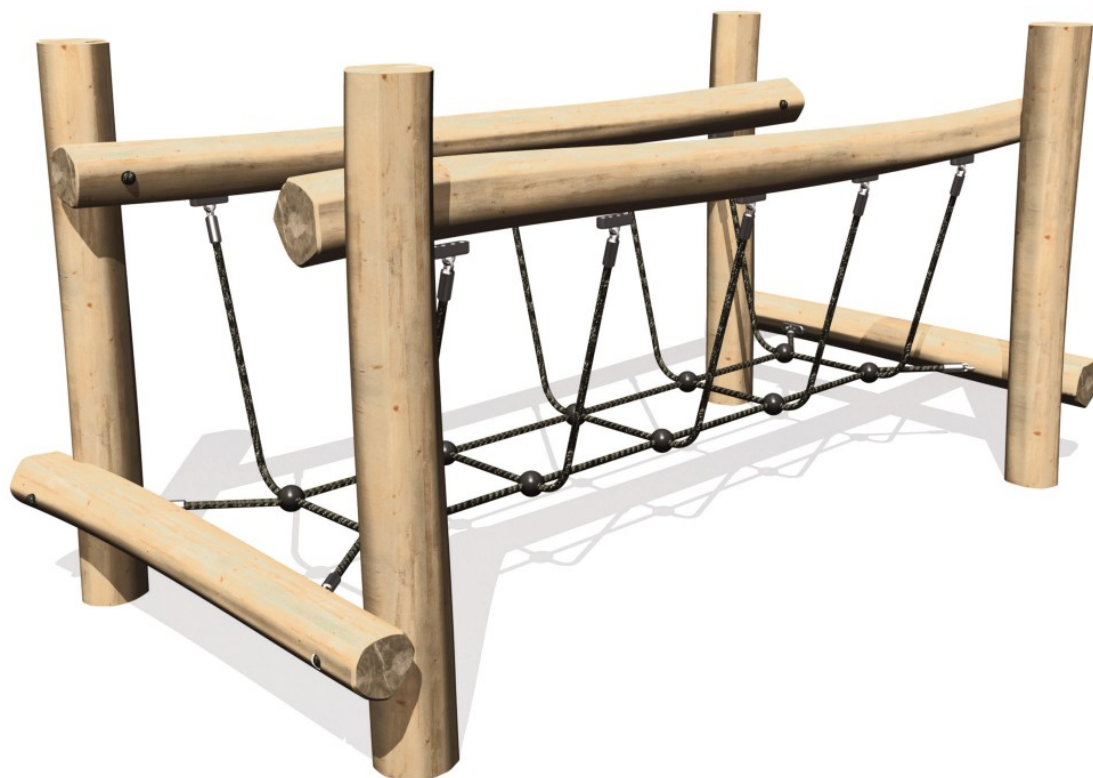
0,6m



1 = 2,36m  
2 = 1,2m  
3 = 1,2m



Physical inclusion  
Sensory inclusion  
Cognitive inclusion



**Play value :** 2

balancing getting across

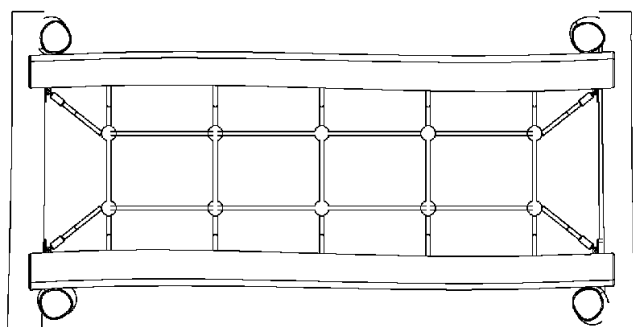


x1



x1

## Components

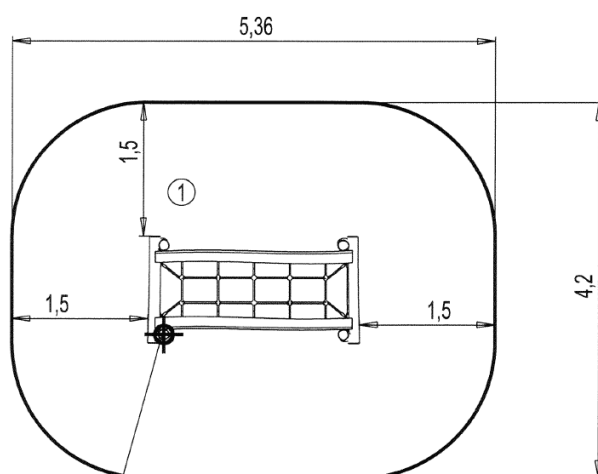


### 1 Suspended net

## Installation of equipment

**IMPORTANT:** It is essential to refer to the installation instructions for information on the size of the safety areas.

- Impact area (minimum normative surface)
- Free space



Point de Référence  
Setting Out Point  
Punto de referencia  
Bezugspunkt  
Referentiepunt



1	<0,6m	21m <sup>2</sup>
---	-------	------------------



2

02h00

0m<sup>3</sup>

21m<sup>2</sup>

145kg

20kg

EN  
1176