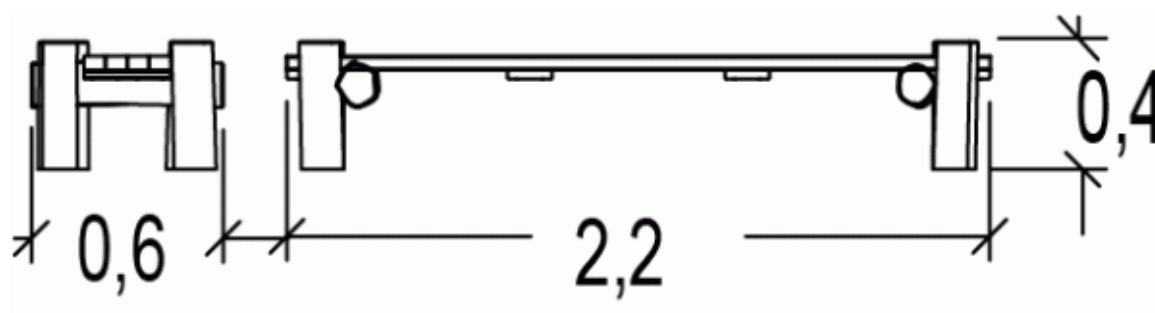


Physical inclusion  
Sensory inclusion  
Cognitive inclusion



**Play value :** **2**

balancing getting across



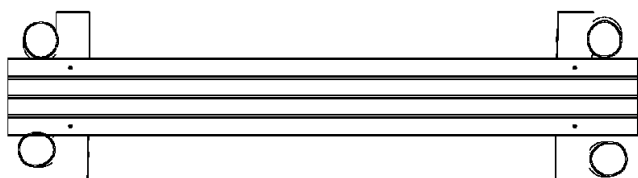
x1



x1

## Components

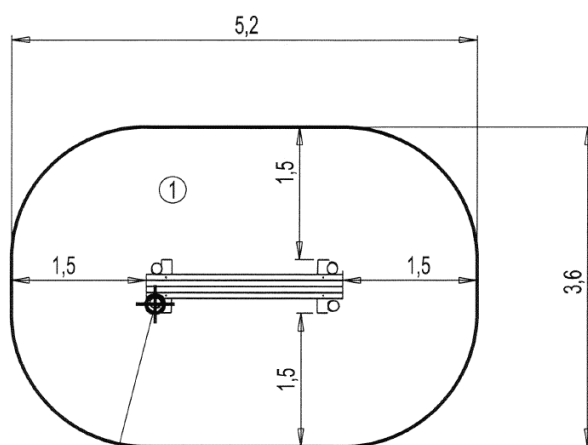
### 1 Bridge



## Installation of equipment

**IMPORTANT:** It is essential to refer to the installation instructions for information on the size of the safety areas.

- Impact area (minimum normative surface)
- Free space



Point de Référence  
Setting Out Point  
Punto de referencia  
Bezugspunkt  
Referentiepunt



1	<0,6m	17m <sup>2</sup>
---	-------	------------------



2

00h50

0m<sup>3</sup>

17m<sup>2</sup>

81kg

17kg

EN  
1176