

**Play value :** 2

hanging

getting across

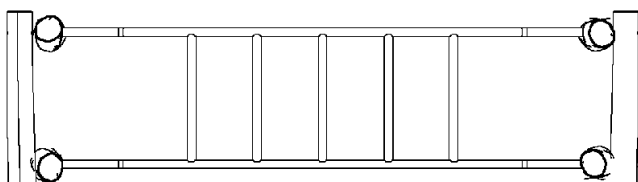


x1

x1

## Components

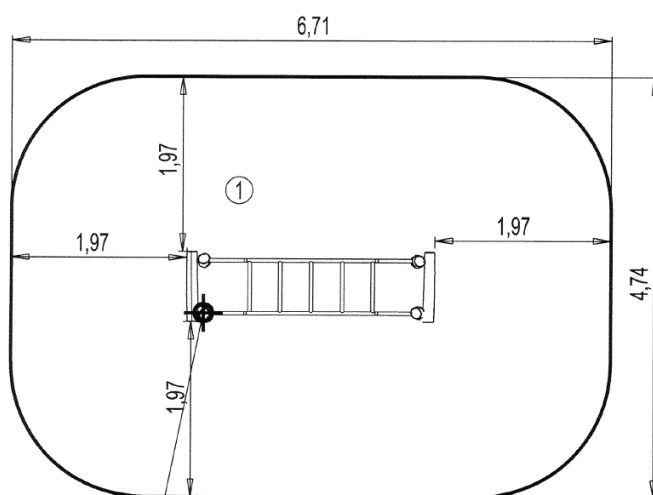
### 1 Horizontal ladder



## Installation of equipment

**IMPORTANT:** It is essential to refer to the installation instructions for information on the size of the safety areas.

- Impact area (minimum normative surface)
- Free space



Point de Référence  
Setting Out Point  
Punto de referencia  
Bezugspunkt  
Referentiepunt



1	2,2m	30m <sup>2</sup>
---	------	------------------



2

01h00

0m<sup>3</sup>

30.5m<sup>2</sup>

175kg

35kg

EN

1176