



2+



5



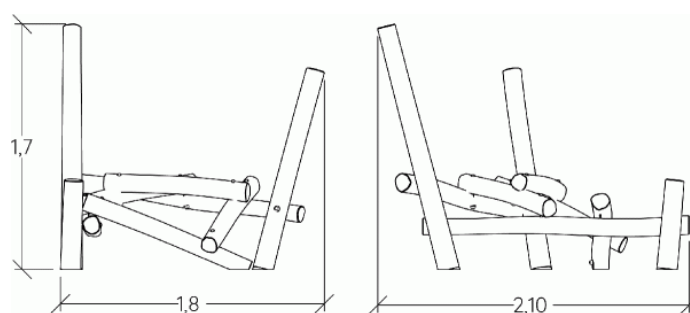
0,6m



1 = 2,1m
2 = 1,8m
3 = 1,7m



Physical inclusion
Sensory inclusion
Cognitive inclusion



Play value :

4

meeting



x1

balancing



x1

climbing



x1

getting across

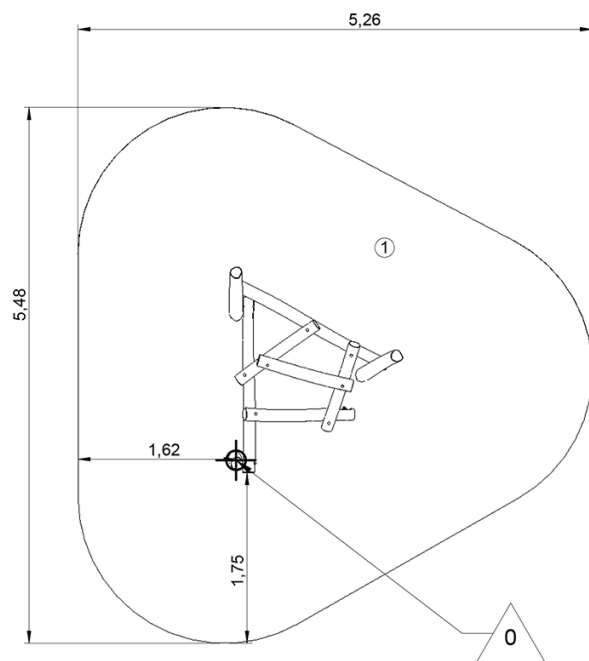




x1

Installation of equipment

IMPORTANT: It is essential to refer to the installation instructions for information on the size of the safety areas.

-  Impact area (minimum normative surface)
 Free space



		
1	0,6m	21,5m ²



2



02h00



0.22m³



21.5m²



169kg



165kg

