



2+



75



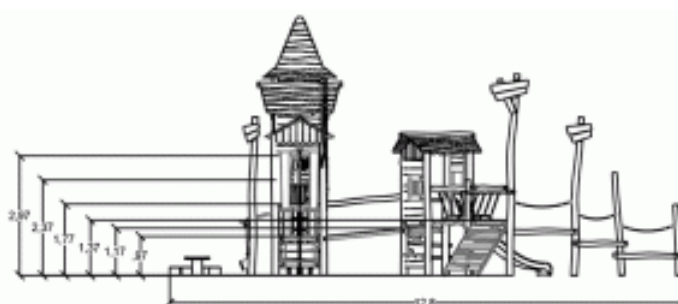
2,2m



1 = 17,3m

2 = 12,8m

3 = 6,4m

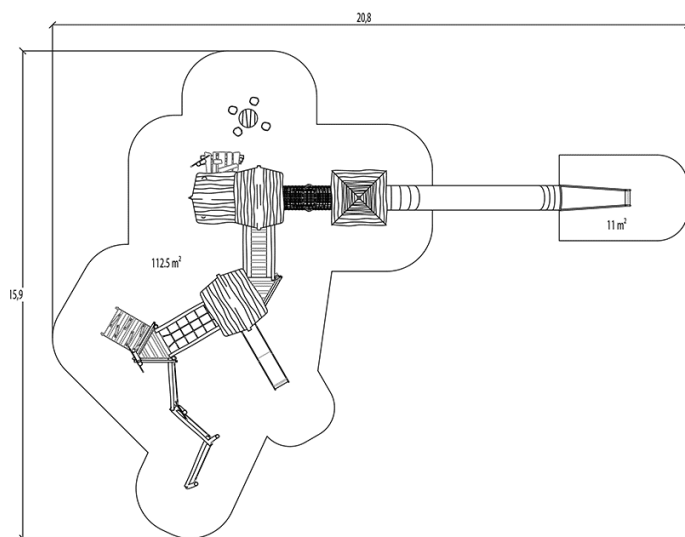


## Installation of equipment

**IMPORTANT:** It is essential to refer to the installation instructions for information on the size of the safety areas.

———— Impact area (minimum normative surface)

- - - - - Free space



1	2,20m	112,5m <sup>2</sup>



0



00h00



1.73m<sup>3</sup>



112.5m<sup>2</sup>



-



-

