



3+



68



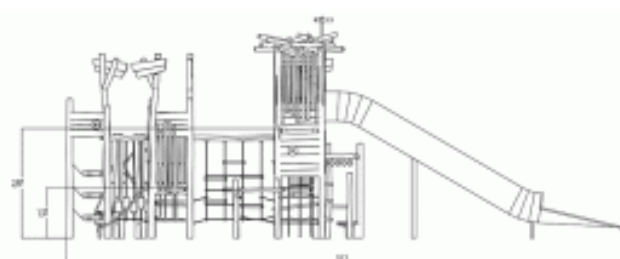
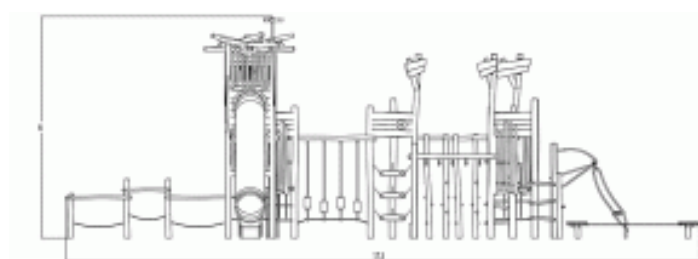
2,8m



1 = 17,3m

2 = 15,2m

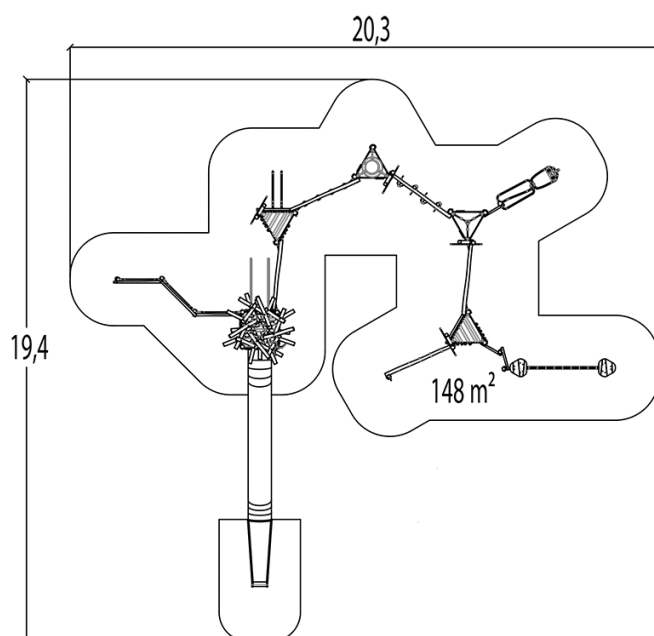
3 = 6m





Installation of equipment

IMPORTANT: It is essential to refer to the installation instructions for information on the size of the safety areas.

-  Impact area (minimum normative surface)
 Free space



		
1	2,80m	148m²



0

2.84m³

148m²

-

-

EN
1176