



2+



4



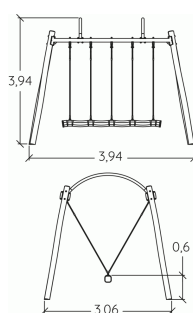
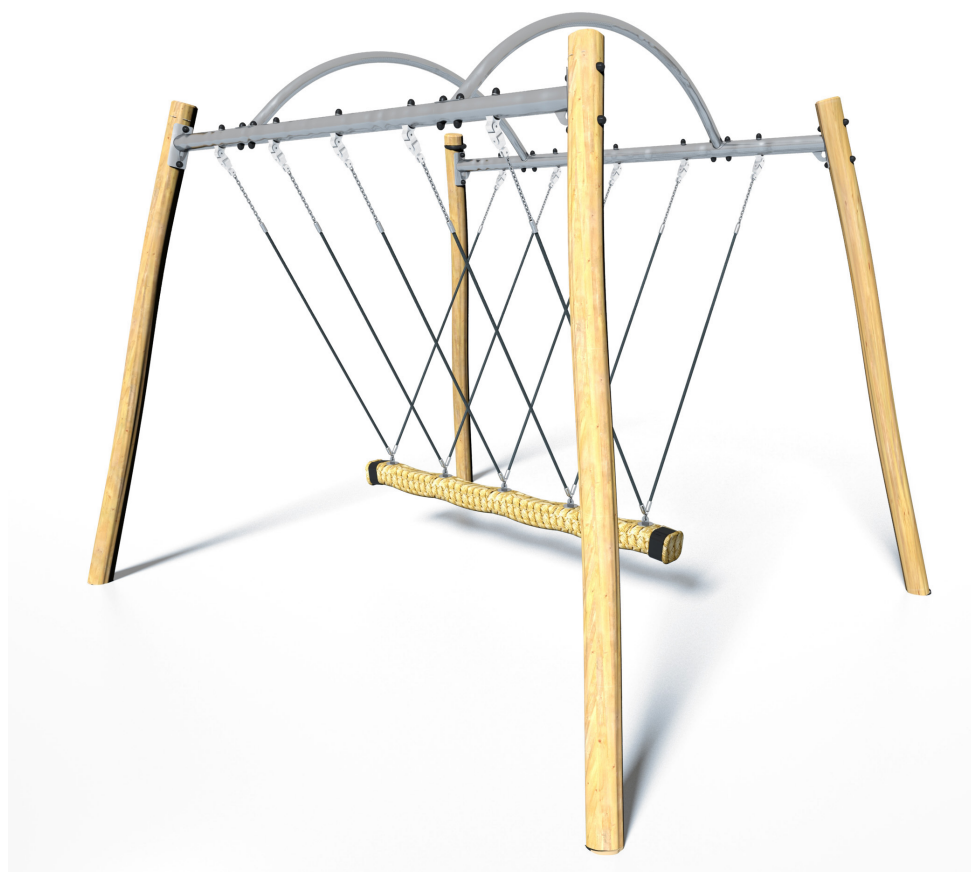
1,5m



1 = 3,06m
2 = 3,94m
3 = 3,94m



Physical inclusion
Sensory inclusion
Cognitive inclusion



Play value : 3

meeting



x1

swinging



x1

balancing



x1

Installation of equipment

IMPORTANT: It is essential to refer to the installation instructions for information on the size of the safety areas.

———— Impact area (minimum normative surface)

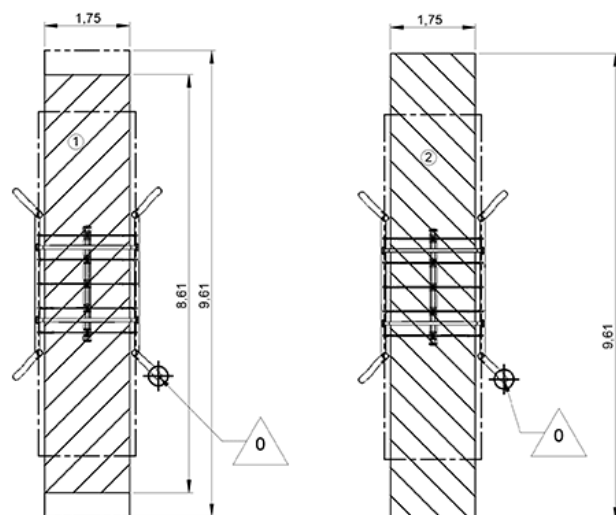
- - - - Free space



Zone d'Impact Sol souple
Impact Area Wetpour
Área de Impacto
Fallraum bei synthetischem Fallschutz



Zone d'Impact Sol fluent
Impact Area Loose particle material
Árenero
Fallraum bei losem Bodenmaterial



1	1,5m	15,5m ²
2	1,5m	17m ²



2

03h00

0.3m³

15.5m²

239kg

38kg



EN

1176