



4+



1



1,4m



1 = 27,79m

2 = 4,18m

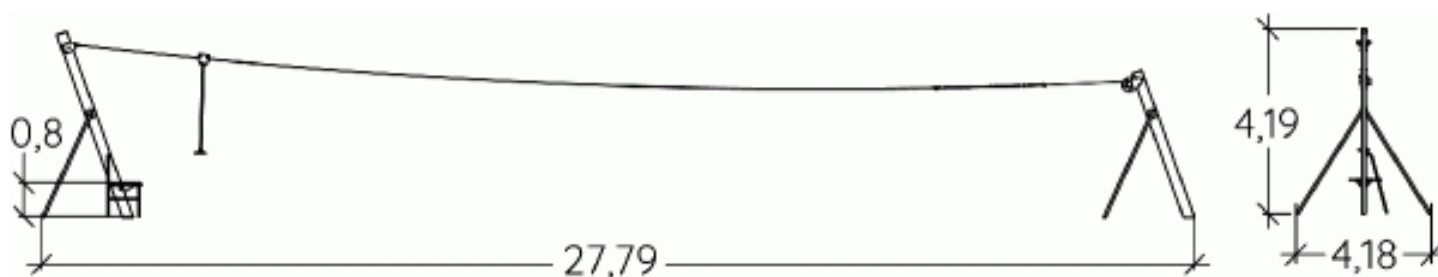
3 = 4,19m



Physical inclusion

Sensory inclusion

Cognitive inclusion



Play value : 3

sliding



x1

meeting



x1

getting across



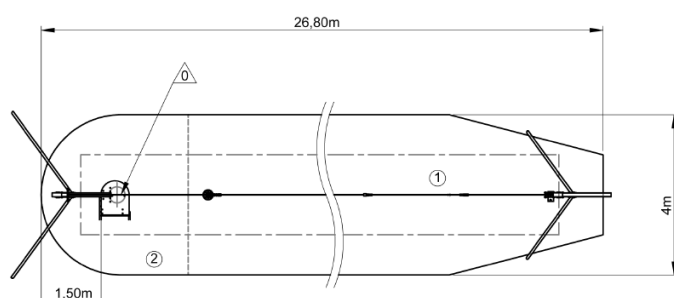
x1

Installation of equipment

IMPORTANT: It is essential to refer to the installation instructions for information on the size of the safety areas.

— Impact area (minimum normative surface)

- - - Free space



1	1m	89m ²
2	1,4m	13,5m ²



2

20h00

3m³

102.5m²

373kg

110kg

EN
1176