



4+



2



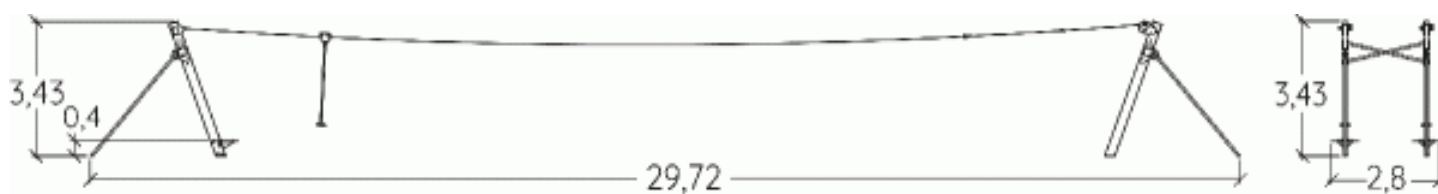
1m



1 = 29,72m
2 = 2,8m
3 = 3,43m



Physical inclusion
Sensory inclusion
Cognitive inclusion



Play value : **7**

sliding



x2

meeting



x1

hanging



x2

getting across



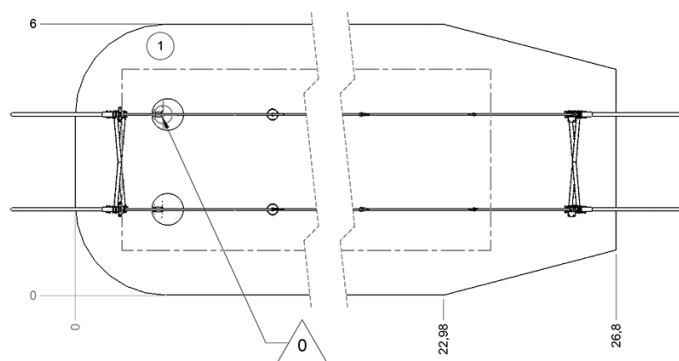
x2

Installation of equipment

IMPORTANT: It is essential to refer to the installation instructions for information on the size of the safety areas.

———— Impact area (minimum normative surface)

- - - - - Free space



1	1m	146m ²
---	----	-------------------



2

10h00

6m³

146m²

656kg

100kg



EN

1176