



4+



1



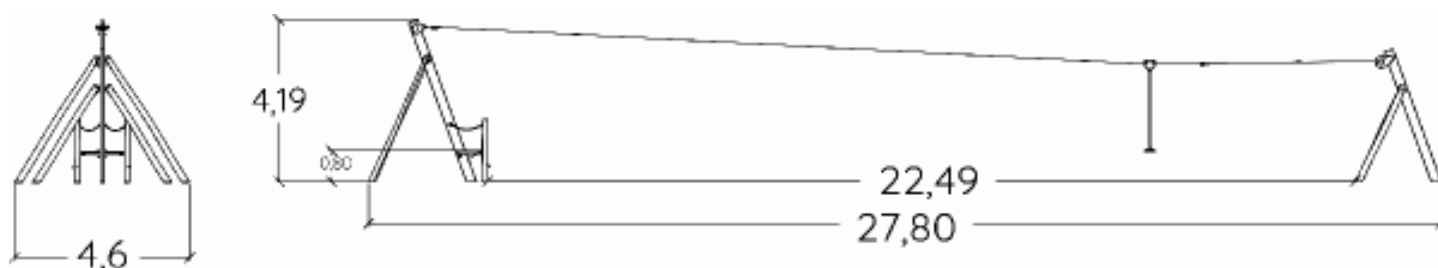
1,4m



1 = 27,8m  
2 = 4,6m  
3 = 4,19m



Physical inclusion  
Sensory inclusion  
Cognitive inclusion



Play value :

4

sliding



x1

meeting



x1

hanging



x1

getting across



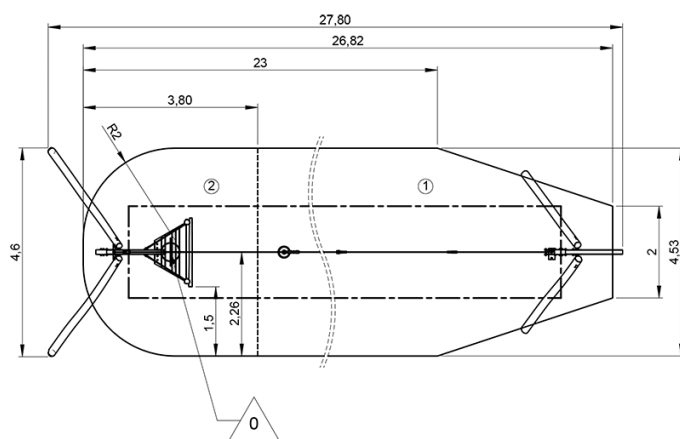
x1

## Installation of equipment

**IMPORTANT:** It is essential to refer to the installation instructions for information on the size of the safety areas.

— Impact area (minimum normative surface)

- - - Free space



1	1m	103m <sup>2</sup>
2	1,4m	13,5m <sup>2</sup>



2



20h00



2.8m<sup>3</sup>



115m<sup>2</sup>



567kg



213kg

