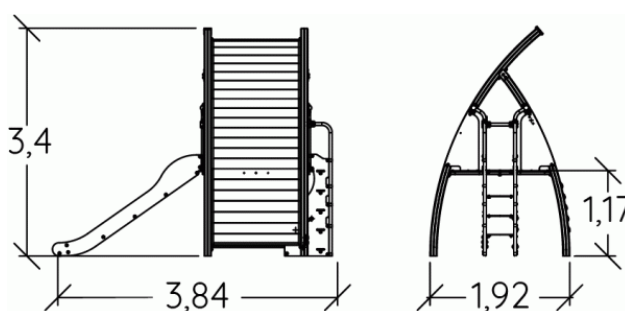


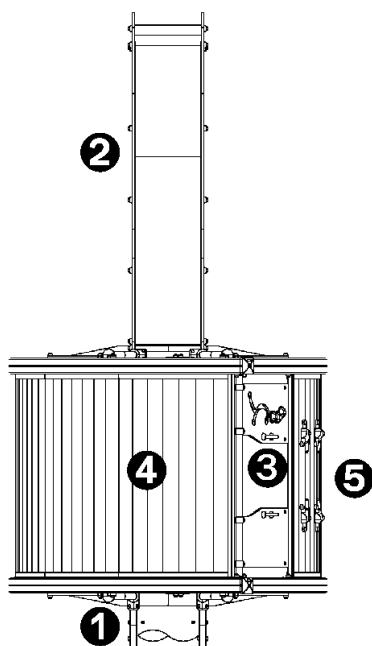
Physical inclusion
Sensory inclusion
Cognitive inclusion



Play value : **13**

climbing	role play	sliding	meeting	handling	hiding	taking shelter	thinking
x1	x1	x1	x1	x2	x1	x1	x2
tactile stimulation	climbing						
x2	x1						

Components

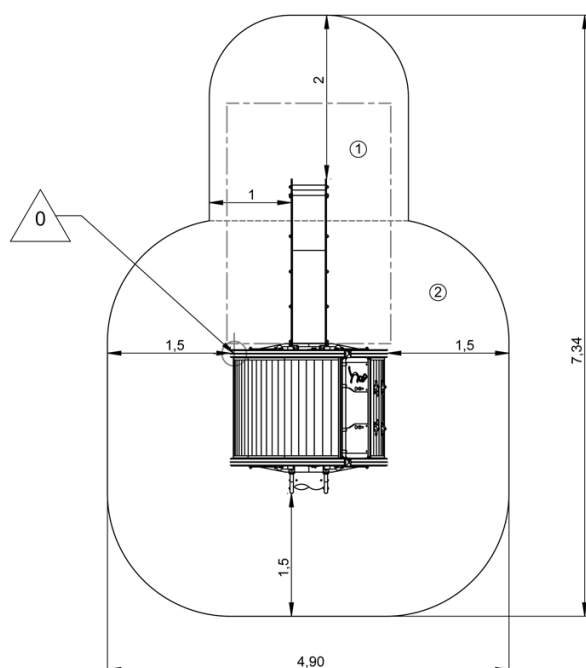


- ❶ Stairs Ht: 1.17m
- ❷ Slide Ht : 1.17m
- ❸ Play panel
- ❹ Climbing wall H: 1.7m
- ❺ Platform H: 1.17m

Installation of equipment

IMPORTANT: It is essential to refer to the installation instructions for information on the size of the safety areas.

- Impact area (minimum normative surface)
- Free space



1	1m	6m ²
2	1,17m	22m ²



2



10h00



0.5m³



28m²



360kg



28kg

