



2+



15



1,17m



1 = 4,01m
2 = 3,28m
3 = 3,36m



Physical inclusion
Sensory inclusion
Cognitive inclusion



Play value : **19**

role play



x1

sliding



x1

meeting



x2

handling



x4

balancing



x1

taking shelter



x1

thinking



x3

tactile stimulation



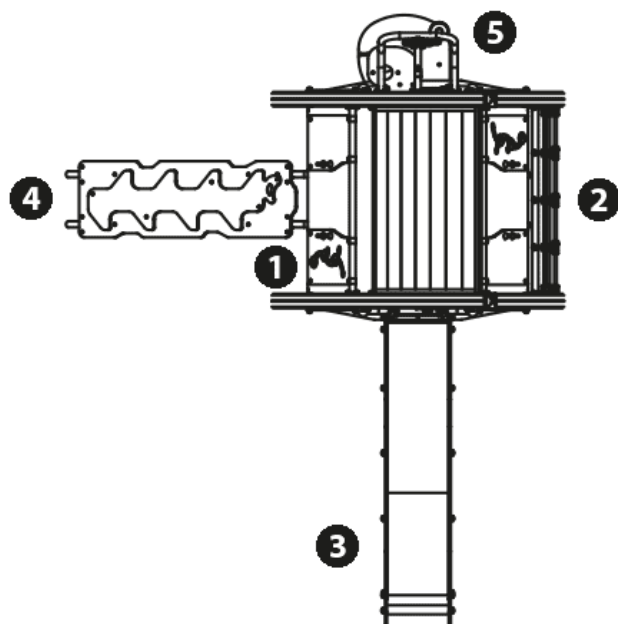
x4

climbing



x2



Components

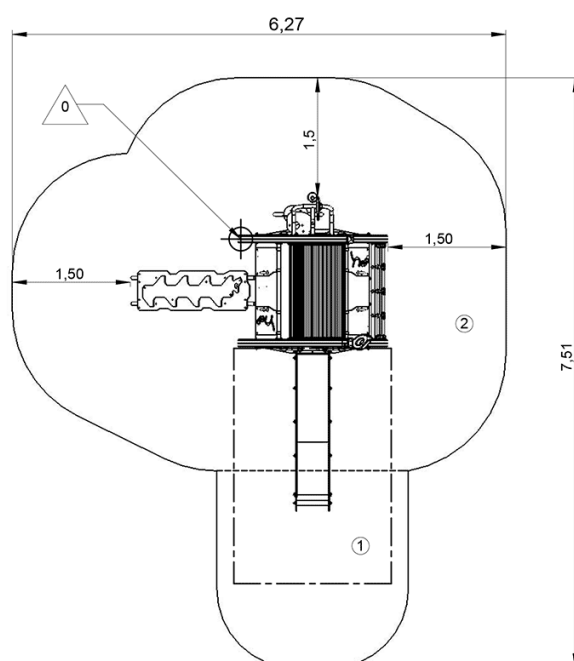




- ❶ Play panel
- ❷ Filet Ht : 1,17 m
- ❸ Slide Ht : 1.17m
- ❹ Slope Ht: 1.17m
- ❺ Jeu de sable

Installation of equipment

IMPORTANT: It is essential to refer to the installation instructions for information on the size of the safety areas.

-  Impact area (minimum normative surface)
-  Free space



		
1	1m	6m ²
2	1,17m	26m ²



2



10h00



0.27m³



32m²



366kg



28kg

