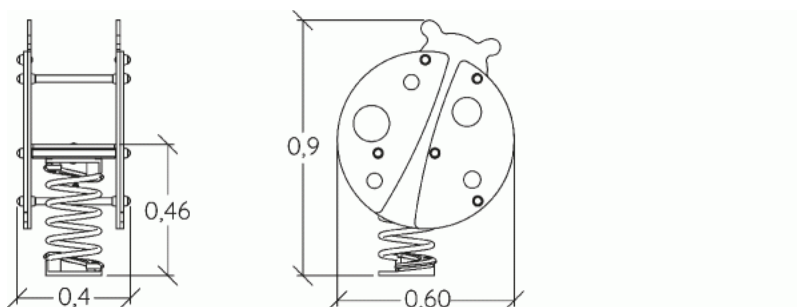




1 = 0,9m  
2 = 0,4m  
3 = 0,6m



Physical inclusion  
Sensory inclusion  
Cognitive inclusion



Play value : **4**

role play



x1

meeting



x1

balancing



x1

Oscillate



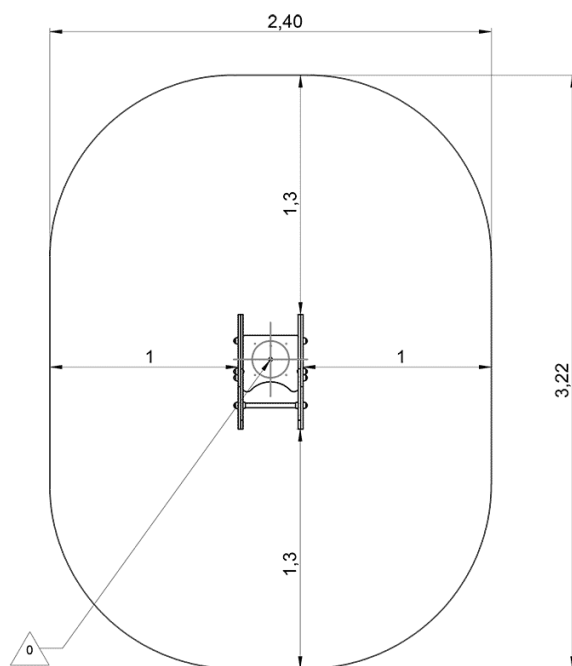
x1



## Installation of equipment

**IMPORTANT:** It is essential to refer to the installation instructions for information on the size of the safety areas.

— Impact area (minimum normative surface)

- - - Free space



		
1	0,6m	7,5m <sup>2</sup>



1



1h00



0m<sup>3</sup>



7.5m<sup>2</sup>



44kg



11kg

