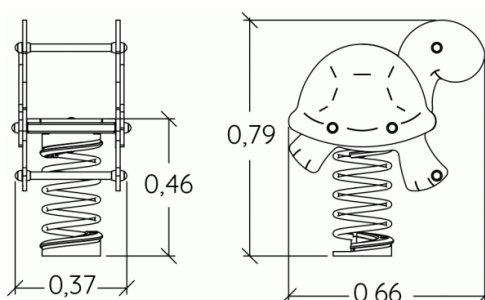
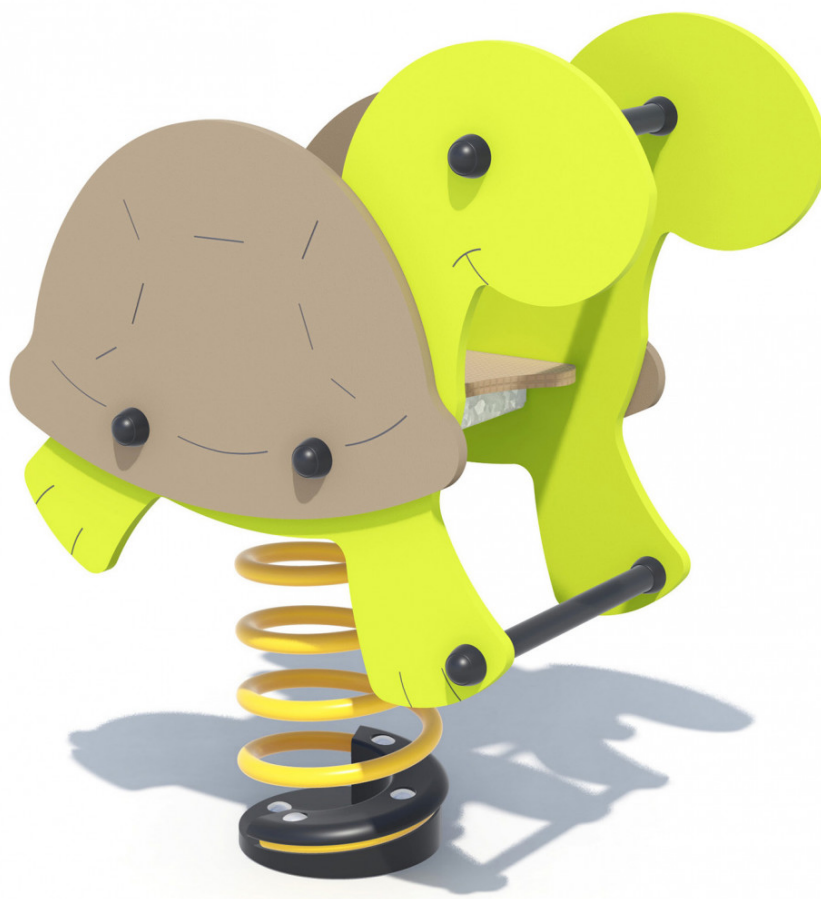


1 = 0,66m  
2 = 0,37m  
3 = 0,79m



Physical inclusion  
Sensory inclusion  
Cognitive inclusion



Play value : 3

role play



x1

balancing



x1

Oscillate

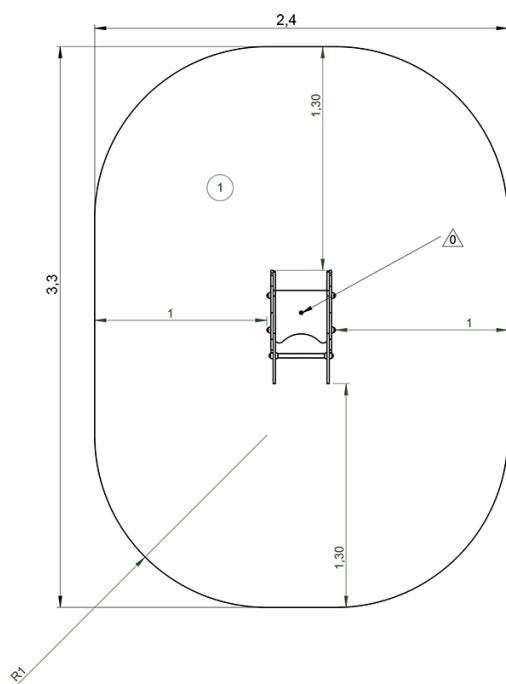




x1

## Installation of equipment

**IMPORTANT:** It is essential to refer to the installation instructions for information on the size of the safety areas.

-  Impact area (minimum normative surface)  
 Free space



		
1	0,6m	7m <sup>2</sup>



1

01h00

0m<sup>3</sup>

7m<sup>2</sup>

30kg

11kg

EN  
1176