



2+



10



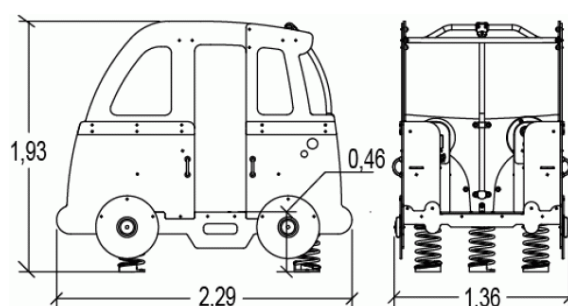
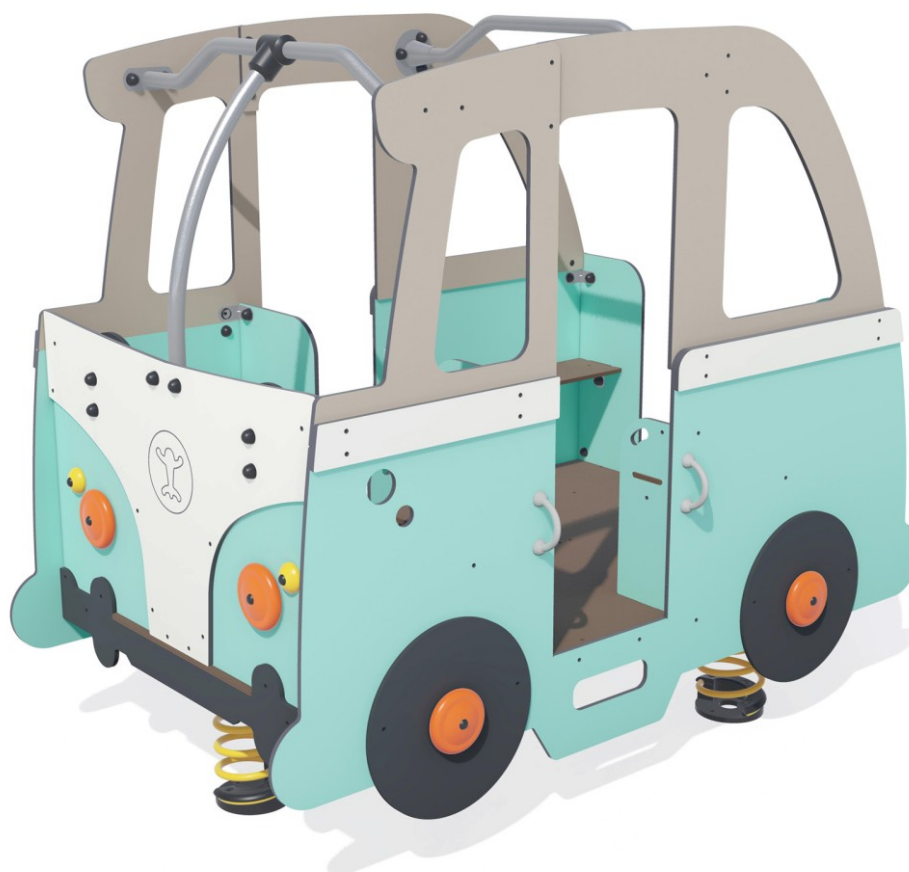
0,6m



1 = 2,29m  
2 = 1,36m  
3 = 1,93m



Physical inclusion  
Sensory inclusion  
Cognitive inclusion



Play value : 10

role play



x1

meeting



x1

resting



x1

handling



x2

balancing



x1

thinking



x1

tactile stimulation



x2

Oscillate

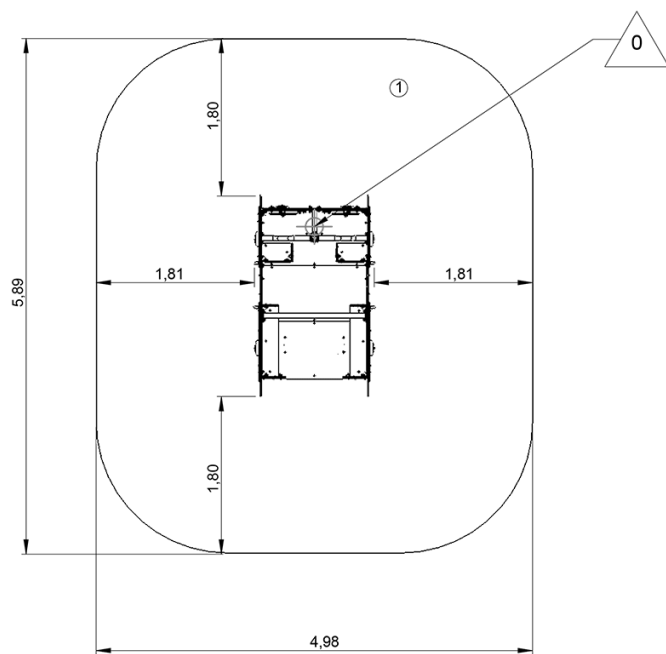


x1

## Installation of equipment

**IMPORTANT:** It is essential to refer to the installation instructions for information on the size of the safety areas.

-  Impact area (minimum normative surface)  
 Free space



1	0,6m	27,5m <sup>2</sup>
---	------	--------------------



2



5h00



0m<sup>3</sup>



27.5m<sup>2</sup>



300kg



13kg

