



2+



8



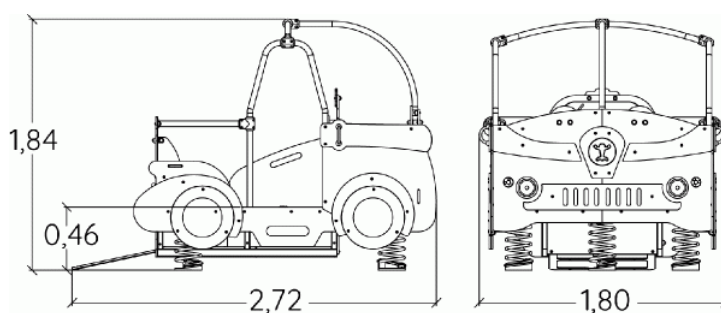
0,6m



1 = 2,72m
2 = 1,8m
3 = 1,84m



Physical inclusion
Sensory inclusion
Cognitive inclusion



Play value : **16**

role play



x1

meeting



x1

resting



x2

handling



x4

sound
stimulation



x1

tactile
stimulation



x5

visual
stimulation



x1

Oscillate

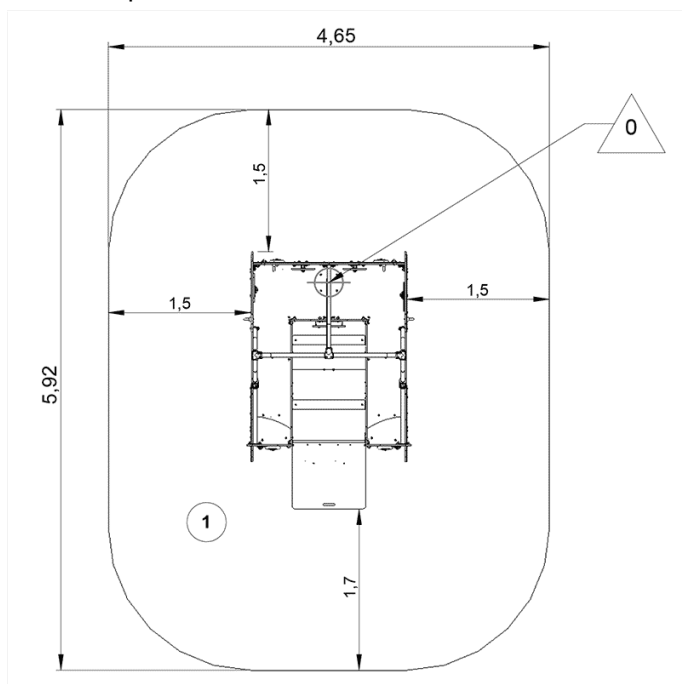




x1

Installation of equipment

IMPORTANT: It is essential to refer to the installation instructions for information on the size of the safety areas.

-  Impact area (minimum normative surface)
 Free space



		
1	0,6m	26m ²



2



04h00



0m³



26m²



376kg



30kg

